

MANUFACTURE STANDARD, MANUFACTURE RELIANCE

# RT-7600S

Auto Hematology Analyzer

**NEW**

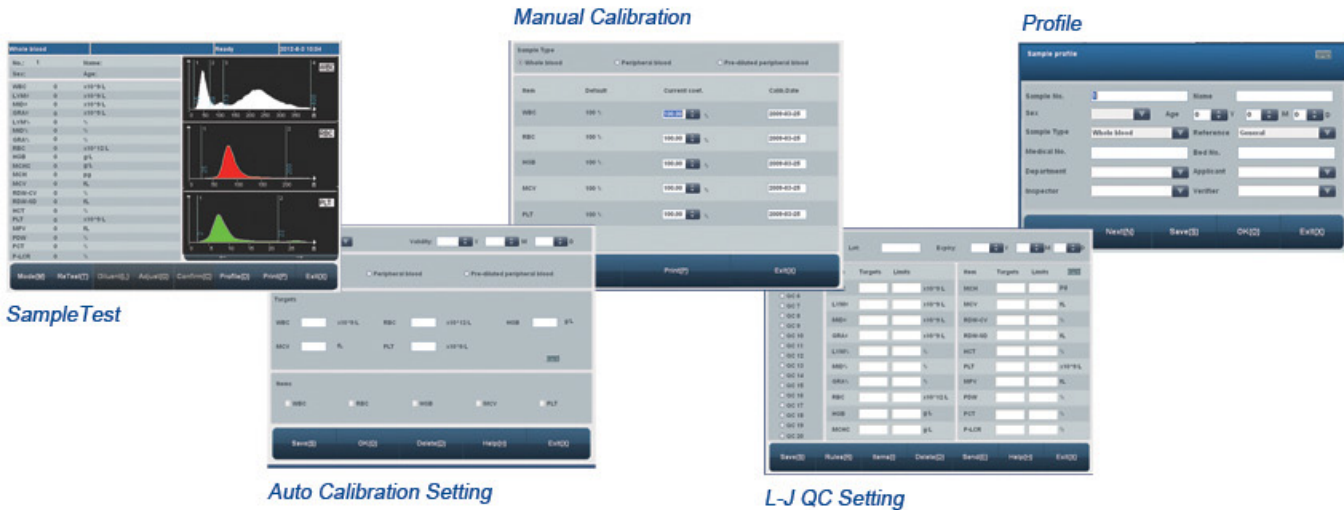


## Features

- 20 parameters+3 histograms
- 3-part differentiation of WBC
- 2 counting mode: whole blood and prediluted
- Up to 60 samples per hour
- Color LCD with mouse/keyboard operation
- Built-in thermal printer, external printer optional
- External AC adapter avoids electronic noises, enhancing accuracy
- Up to 35000 sample results (including histograms) can be stored
- Multi-language software available on request
- Original factory's blood control and calibrator

# RT-7600S

## Auto Hematology Analyzer



### Technical Specifications

|                       |   |
|-----------------------|---|
| Parameters            | WBC, LYM#, MID#, GRA#, LYM%, MID%, GRA%, RBC, HGB, MCHC, MCH, MCV, RDW-CV, RDW-SD, HCT, PLT, MPV, PDW, PCT, P-LCR and Histograms for WBC, RBC and PLT |
| Principles            | Electrical resistance for counting WBC, RBC and PLT   |
| Sample Volume         | Prediluted 20µL, Whole Blood 9.8µL  |
| Throughput            | Up to 60 samples per hour   |
| Display               | 8" color LCD  |
| Alarms                | Error messages  |
| Input/Output          | RS-232, USB, LAN, keyboard and mouse interface  |
| Printout              | Built-in thermal printer, external printer optional   |
| Power Requirement     | a.c. 110V-220V, 50Hz/60Hz   |
| Operating Environment | Temperature: 15°C~35°C; Humidity: 10%~90%   |
| Net Weight            | 18kg  |
| Dimension L×W×H (mm)  | 436×363×367   |



### Rayto Life and Analytical Sciences Co., Ltd.

2nd Floor, 5th Building, Software Park, NO.2, Gaoxinzhong  
3rd Road, High-tech Industrial Park, Nanshan,  
Shenzhen 518057, P.R. China  
Tel: +86(755)86868996 Fax: +86(755)86168796  
Email: info@rayto.com

